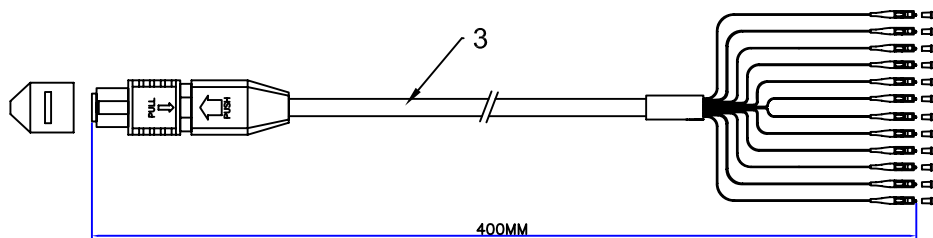
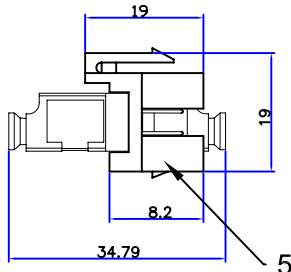
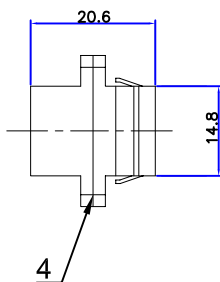
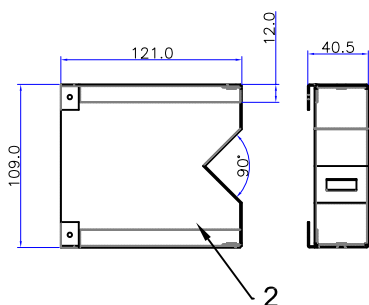
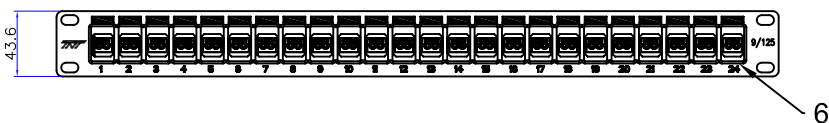
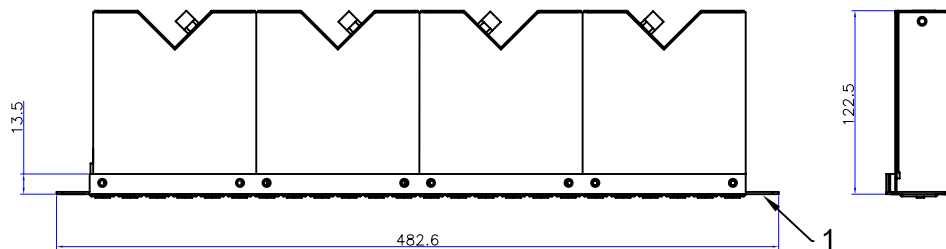





Specification:

MTP to LC Rack-mount panel

1. Panel: 1U 24 ports high density patch panel, Black coating, white silkscreen.
2. Box: SPCC, Black coating.
3. Cable: MTP to 12LC fan out cable, 9/125.
4. Adapter: MTP to MTP adapter
5. Adapter: Duplex LC single-mode adapter, snap-in module
6. Module: Snap-in bezel, Yellow color.



C				
B				
A	INITIAL RELEASE			01/02/08
REV	DESCRIPTION OF CHANGE			DATE
TOLERANCE		 Tri-Net Technology, Inc. http://www.trinetusa.com		
.X	.015	.30	SCALE	NONE
.XX	.010	.10	UNIT	MM
.XXX	.005	.05	SHEET	1/1
DRAWN BY	Debird		DATE	01/02/08
CHECK BY			DWG NO.	
APPD BY			TITLE	24ports MTP to LC rack mount panel
			PART NO.	898-DLC-24-S