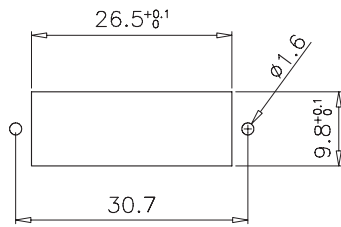
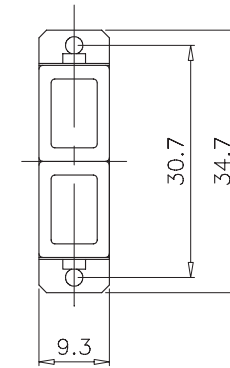
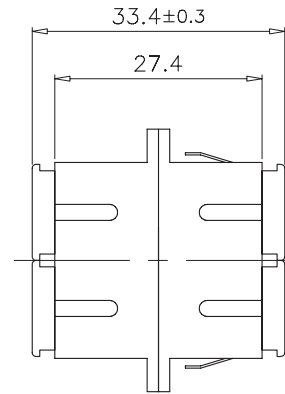


SCALE 1/1



SUGGESTED PANEL CUTOUT



Specification :

Material :

1. SC Housing : PBT, UL 94V-0, Blue color.
2. SC Dust Cover : PP, Black color.
3. Holder : PBT, UL 94V-0, Blue color.
4. Clip : STAINLESS.

Adaptor Type :

- a. SC to SC Duplex Type, Singlemode.
- b. Sleeve : Zirconia.
- c. Operation Temperature : -20°C to +70°C.
- d. Durability : 500 cycles.
- e. Tensile Strength : 10 kgf.
- f. Insertion Loss : <0.2 dB.



TOLERANCE			Tri-Net Technology, Inc. http://www.trinetusa.com			
INCHES		M/M				
.X	.015	.30	UNIT	MM	SHEET 1/1 DATE 08/14/06 DWG NO. 890-DSC-DSC-S	
.XX	.010	.10	DRAWN BY	KLi		
.XXX	.005	.05	CHECK BY		TITLE	
			APPD BY		SC to SC Adaptor-Duplex Type SM	
					PART NO.	
					890-DSC-DSC-S	