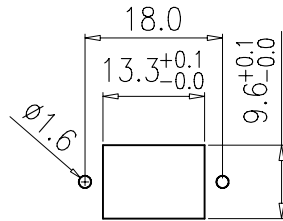


SCALE 1/1



SUGGESTED PANEL CUTOUT

Specification:

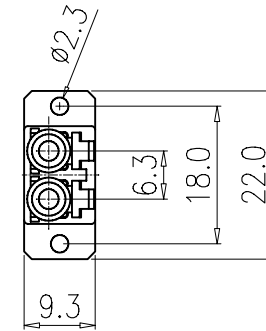
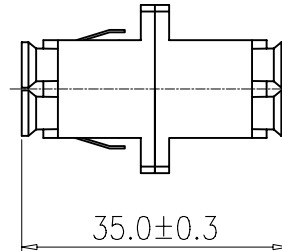
Material:

1. Housing: PC UL 94V-0, Ivory Color.
2. Dust Cover: PP3105, White Color.
3. Clip: Stainless.

Performance:

- a. LC Duplex Type , Multimode.
- b. Sleeve: Phosphor Bronze.
- c. Operation Temperature: -20°C to +70°C.
- d. Durability: 500 cycles.
- e. Tensile Strength: 10 kgf.
- f. Insertion Loss: <0.3 dB.

Parameter	Condition	Multimode	Singlemode
Insertion loss	$\lambda=1300\text{nm}$	<0.3dB	<0.2dB
Operation Temperature	-20~70°C	0.2dB	0.2dB
Durability	500 cycles	0.2dB	0.2dB
Temperature Cycle	-20~80°C	0.2dB	0.2dB
Tensile Strength	10kgf	0.2dB	0.2dB



TOLERANCE			<b>Tri-Net Technology, Inc.</b> <a href="http://www.trinetusa.com">http://www.trinetusa.com</a>				
INCHES		M/M					
.X	.015	.30	SCALE	1/1		REV A	
.XX	.010	.10	UNIT	MM			
.XXX	.005	.05	SHEET	1/1	DWG NO.		
DRAWN BY			Jack		DATE		10/12/04
CHECK BY			Debird		TITLE		LC-LC MM DUPLEX ADAPTER
APPD BY			Peter		PART NO.		890-DLC-DLC-M