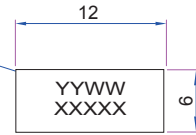
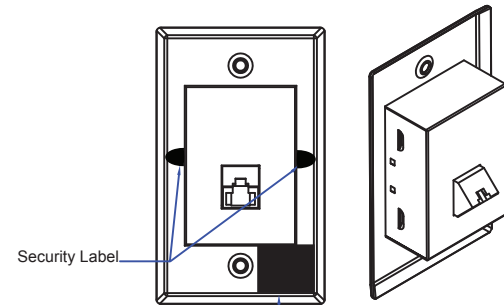


Housing Label (Receiver)
(25 x 19 mm ,Black on White)



DATE CODE
Size: 12 mm x 6 mm
(Black on white)



Security Label

Housing Label(Transmitter)

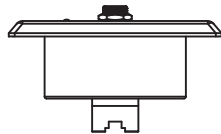
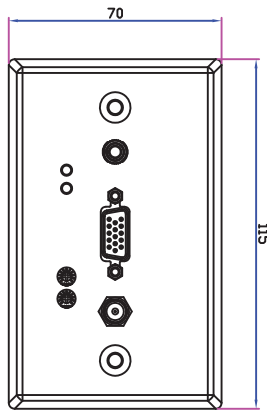
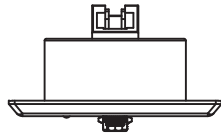
View A



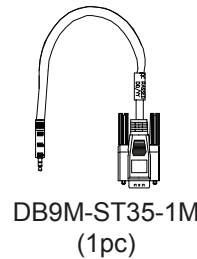
Housing Label(Transmitter)
(25 x 19mm,Black on White)



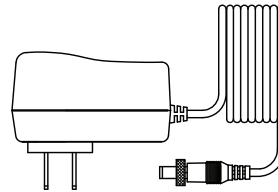
Security Label
(25 x 15mm,Color)



View A



DB9M-ST35-1M
(1pc)



Power adapter
Input: 100-240V
Output: 5V,2A

Specification:

1. Work with monitors, projectors, and HDTV and flat panels.
2. Receive VGA Video and Uni-directional RS232 signal on single CAT5e/6 cable
3. RS-232 work with scanner and touch screen control
4. Support all RS-232 baud rate to 115 Kbps from receiver to transmitter.
4. Support resolution up to 1920 x1440 at any refresh rate
5. Built-in local VGA connecting port at transmitter for local port
6. Wall plate style:18 gauge metal plate with 45° RJ45
7. Receiver: 1xRJ45 terminal input and 1 xVGA female output/AC DC POWER, metal wall plate
8. Secure AC/DC power adapter with unit by screw type connection
9. Screw driver include for receiver EQ adjustment to tune up best image quality up to 500 feet

REV	DATE	INITIAL RELEASE			
REV	DATE	DESCRIPTION OF CHANGE			
GENERAL TOLERANCE (Unless Specified)		Tri-Net Electronics Co. Ltd.			
DECIMALS	INCHES	MM	UNITS	mm	Title
.x	0.015	0.30	SHEET	3-1	VGA with RS-232 UTP Extender 45° RJ45 Receiver Wallplate
.xx	0.010	0.10	DATA	10/06/11	PART NO R02T-EXT-RS-RX-JP
.xxx	0.005	0.05		VER. A	DWG NO R02T-EXT-RS-RX-JP
ANGLE : ± 0.5°		APPD.	CHK.		DR. Afra