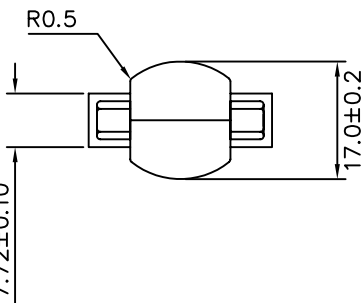


DVI29F	DVI29F	DVI29F	DVI29F
1	1	16	16
2	2	17	17
3	3	18	18
4	4	19	19
5	5	20	20
6	6	21	21
7	7	22	22
8	8	23	23
9	9	24	24
10	10	C1	C1
11	11	C2	C2
12	12	C3	C3
13	13	C4	C4
14	14	C5	C5
15	SHELL	SHELL	SHELL



NOTE1.CONTACT FINISH  
 CONTACT AREA:GOLD OVER NICKEL PLATED(GOLD:0.1 m MIN)  
 TERMINAL AREA:TIN-LEAD PLATED

- 1:ELECTRICAL  
 1.1 RATED:1.5A 40V (AC)  
 1.2 CONTACT RESISTANCE:50mΩ MAXIMUM.  
 1.3 INSULATION RESISTANCE:1000MΩ MINIMUM.  
 1.4 DIELECTRIC WITHSTANDING VOLTAGE:500V.
- 2.MATERIAL  
 3.1 HOUSING;HIGH TEMPERATURE THERMPLASTIC UL94V-0.  
 (IVORY,BLACK)  
 3.2 CONTACT:PHOSPHOR BRONZE,GOLD OVER NICKEL PLATED  
 3.3 FINISH:TIN-LEAD PLATED  
 3.4 FORE SHELL:STEEL NICKEL PLATED  
 3.5 INSULATOR COLOR: WHITE,BLACK

E09-DF-DF

SHOWN COLOR



TOLERANCE			TNT Tri-Net Technology			
INCHES	M/M	SCALE				
.X	.015	.30	UNIT	MM	DWG NO.	
.XX	.010	.10	SHEET	1/1		
.XXX	.005	.05	DATE	12/05/03	TITLE: DVI 24+5F TO DVI 24+5F ADAPTER	
DRAWN BY			PART NO.		E09-DF-DF	
CHECK BY						
APPD BY						