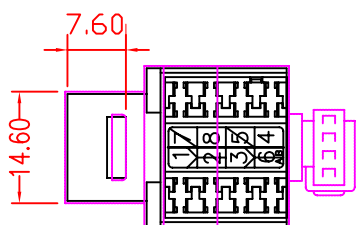
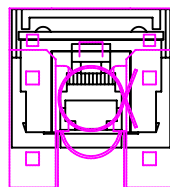
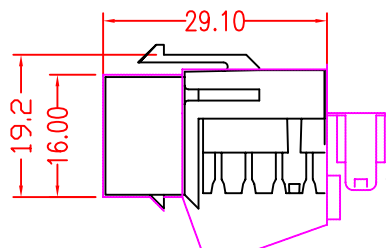
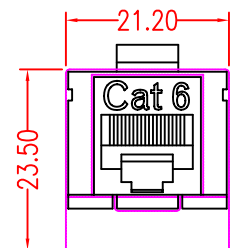
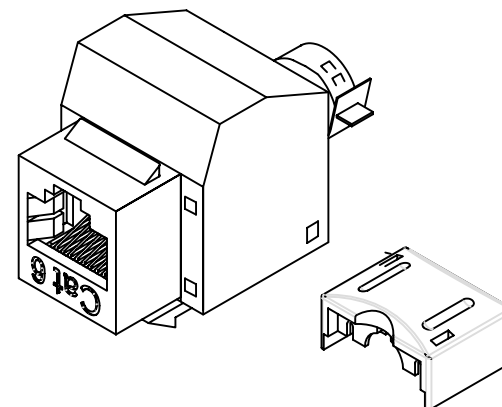




REVISIONS				
ZONE	REV	DESCRIPTION	DATE	APPROVED
	▲			



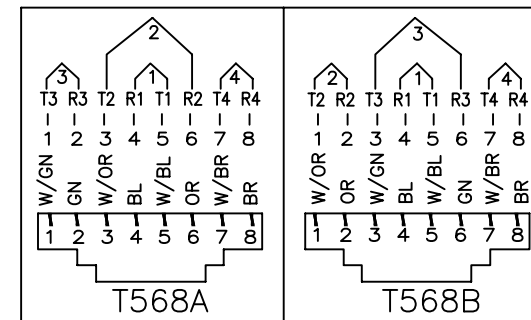
SHIELDED



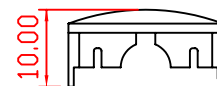
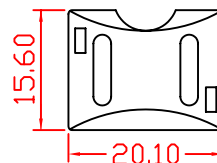
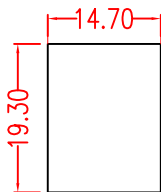
Cat 6
UL CERTIFIED



ACCORDING TO TIA/EIA-568-B.2-1
REQUIREMENTS
FILE NO.E145249



SUGGESTED PANEL CUTOUT



CAP

MATERIAL

Housing: ABS, UL 94V-0
 IDC plastic: PC, UL 94V-0
 IDC contact: Phospher Bronze with 200u
 " Tin over 100u" Nickel undercoat
 Spring Wire: Phospher Bronze with 50u
 " Gold over 100u" Nickel undercoat
 Temperature: -40°C ~ 70°C
 Humidity: 10% ~ 90% RH
 Modular jack:750 mating cycles
 Idc block:200 termination cycles
 Shield:Bronze over Nickle

ELECTRICAL

Current rating: 1.5 Amps
 Insulation resistance: 500 MOhm
 Contact resistance: 20 mOhm
 DC resistanc: 0.1 Ohm
 Dielectric withstanding voltage: 1000 V

COMMON TOLERANCE			SHEET OF		ALL COPY RIGHTS RESERVED	
CLASS	A	B	SIZE	A4		
	DIMENSION		DIA	mm		
L<=3	±0.05	±0.1	SCALE	1:1	TITLE 07E-I88-C6	
3<L<=6	±0.05	±0.1	DATE	2003.11.25		
6<L<=16	±0.1	±0.15	DESIGN		DRAWING NO. K-103	
16<L<=30	±0.1	±0.2	DRAWN			
30<L<=120	±0.15	±0.3	CHECKED			
120<L<=315	±0.2	±0.5				