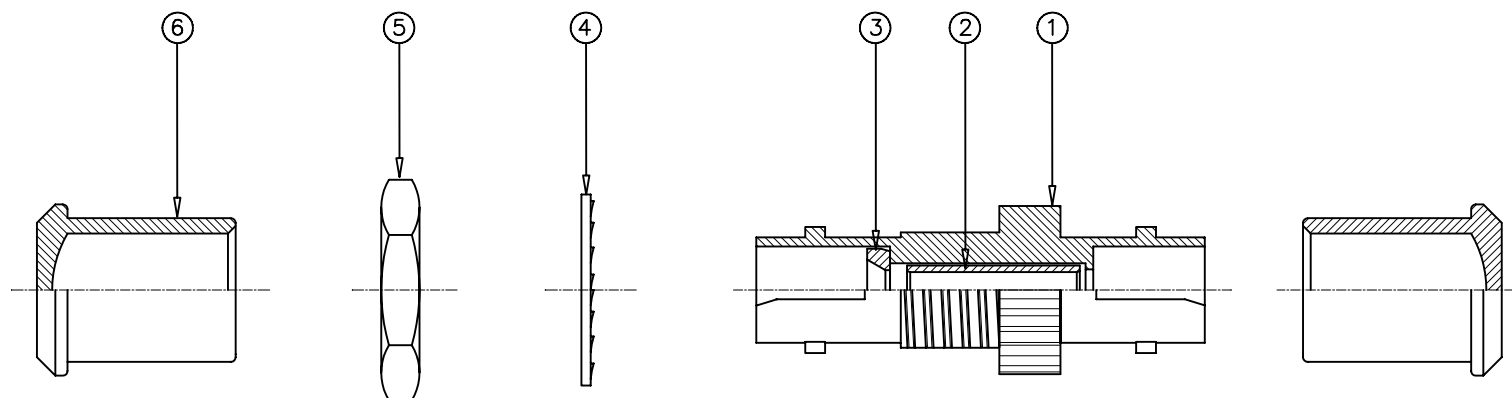


SUGGESTED PANEL CUTOUT



## MECHANICAL

1. ST HOUSING: ZINC ALLOY, NICKEL PLATING.
2. SLEEVE: PHOSPHOR BRONZE.
3. BUSH: ZINC ALLOY, NICKEL PLATING.
4. WASHER: STEEL, NICKEL PLATING.
5. NUT: BRASS, NICKEL PLATING.
6. DUST COVER: PVC.

Parameter	Condition	Multimode	Singlemode
Insertion loss	$\lambda=1300\text{nm}$	<0.3dB	<0.2dB
Operation Temperature	-20~70°C	0.2dB	0.2dB
Durability Temperature	500 cycles	0.2dB	0.2dB
Cycle	-20~80°C	0.2dB	0.2dB
Tensile Strength	10kgf	0.2dB	0.2dB



TOLERANCE			Tri-Net Technology, Inc.	
INCHES	M/M	<a href="http://www.trinetusa.com">http://www.trinetusa.com</a>		
.X	.015	.30	SCALE	1/1
.XX	.010	.10	UNIT	MM
.XXX	.005	.05	SHEET	1/1
DRAWN BY Jack			DATE	10/12/04
CHECK BY Debird			TITLE ST-ST MM SIMPLEX ADAPTER	
APPD BY Peter			PART NO. 071-IST-XX	