

SCALE 1/1

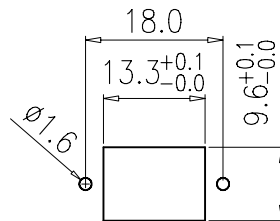
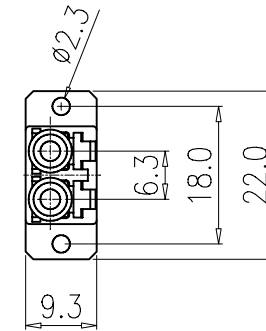
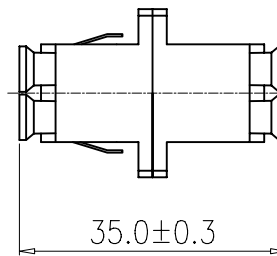
Specification:

Material:

1. Housing: PC UL 94V-0, Ivory Color.
2. Dust Cover: PP3105, White Color.
3. Clip: Stainless.

Performance:

- a. LC Duplex Type , Multimode.
- b. Sleeve: Phosphor Bronze.
- c. Operation Temperature: -20°C to +70°C.
- d. Durability: 500 cycles.
- e. Tensile Strength: 10 kgf.
- f. Insertion Loss: <0.3 dB.



SUGGESTED PANEL CUTOUT

Parameter	Condition	Multimode	Singlemode
Insertion loss	$\lambda=1300\text{nm}$	<0.3dB	<0.2dB
Operation Temperature	-20~70°C	0.2dB	0.2dB
Durability	500 cycles	0.2dB	0.2dB
Temperature Cycle	-20~80°C	0.2dB	0.2dB
Tensile Strength	10kgf	0.2dB	0.2dB



TOLERANCE			Tri-Net Technology, Inc.			
INCHES	M/M		http://www.trinetusa.com			
.X	.015	.30	SCALE	1/1	REV A	
.XX	.010	.10	UNIT	MM		
.XXX	.005	.05	SHEET	1/1	DWG NO.	
DRAWN BY Jack			DATE	10/12/04		
CHECK BY Debird			TITLE LC-LC MM DUPLEX ADAPTER			
APPD BY Peter			PART NO. 071-DLC-XX			