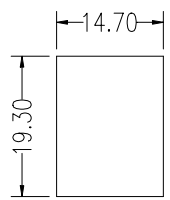
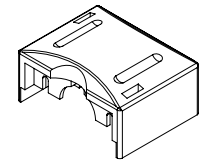
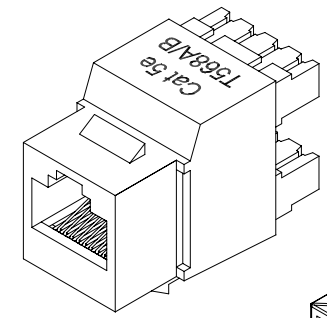
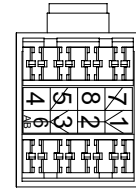
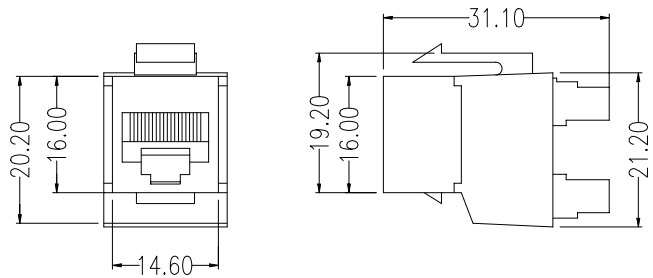
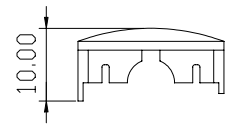
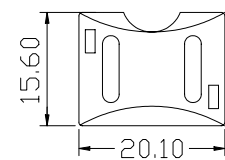
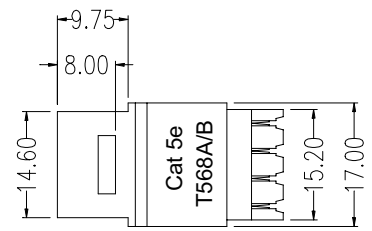




REVISIONS				
ZONE	REV	DESCRIPTION	DATE	APPROVED
	▲			
	▲			



SUGGESTED PANEL CUTOUT

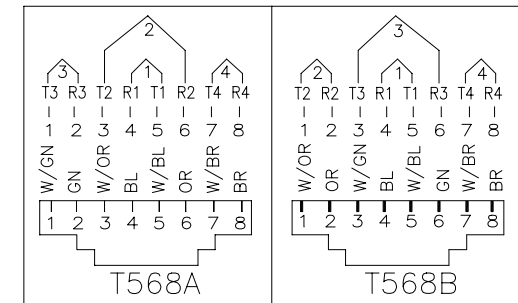


CAP

Cat 5e
UL CERTIFIED



ACCORDING TO TIA/EIA-568-B-2
REQUIREMENTS
FILE NO. E145249



MATERIAL

- Housing: ABS, UL 94V-0
- IDC plastic: PC, UL 94V-0
- IDC contact: Phosphor Bronze with 200u" Tin over 100u" Nickel undercoat
- Spring Wire: Phosphor Bronze with 50u" Gold over 100u" Nickel undercoat
- Temperature: -40°C ~ 68°C
- Humidity: 10% ~ 90% RH
- Modular jack: 750 mating cycles
- Idc block: 200 termination cycles

ELECTRICAL

- Current rating: 1.5 Amps
- Insulation resistance: 500 MOhm
- Contact resistance: 20 mOhm
- DC resistance: 0.1 Ohm
- Dielectric withstanding voltage: 1000 V

COMMON TOLERANCE		SHEET OF		ALL COPY RIGHTS RESERVED	
CLASS	A B	SIZE	A4		
DIMENSION		DIA	mm		
L<=3	±0.05 ±0.1	SCALE	1:1	TITLE	
3<L<=6	±0.05 ±0.1	DATE	2002.09.25	07B-I88-YY-M	
6<L<=16	±0.1 ±0.15	DESIGN		DRAWING NO.	
16<L<=30	±0.1 ±0.2	DRAWN		K-072-3	
30<L<=120	±0.15 ±0.3	CHECKED			
120<L<=315	±0.2 ±1				