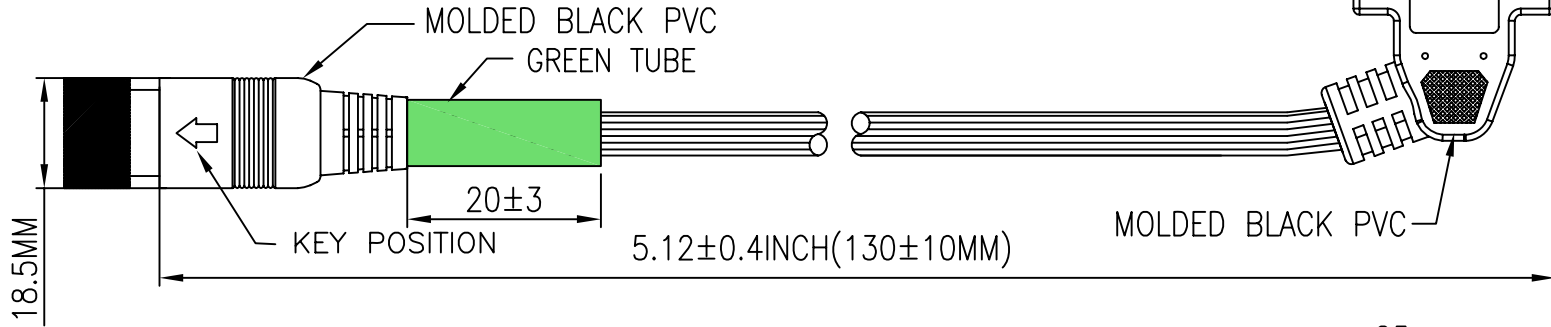
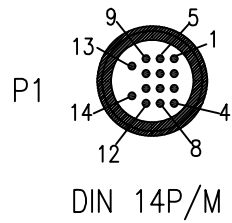
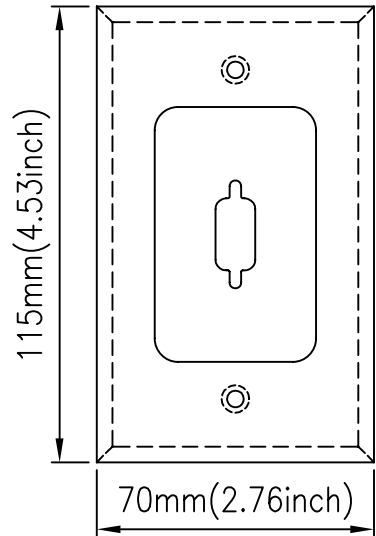


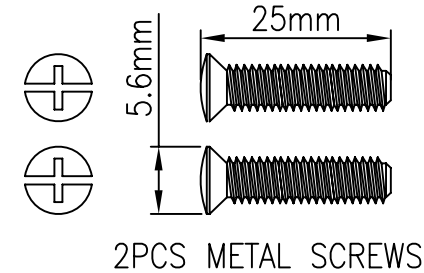
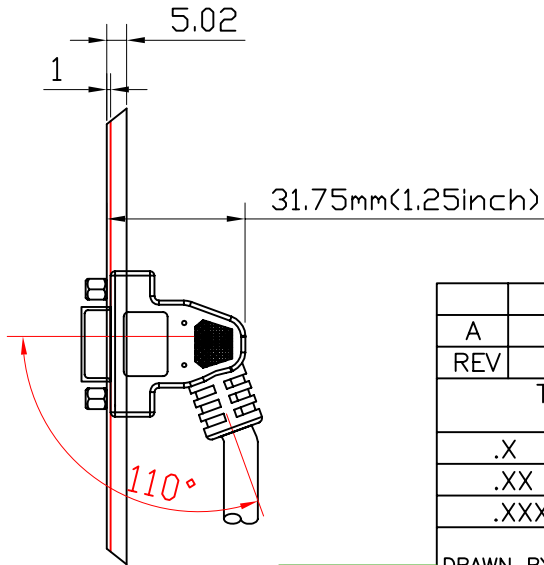
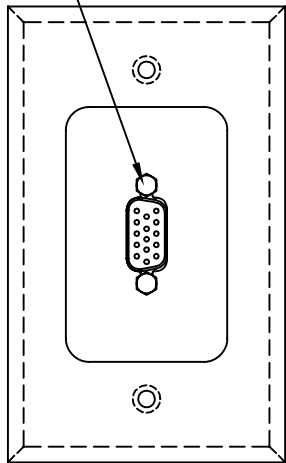
APPROVED BY _____
 COMPANY: _____
 PURCHASING/ENGINEER: _____
 DATE: _____



HDB15 1PORT FACE PLATE



HEX NUT (X2)



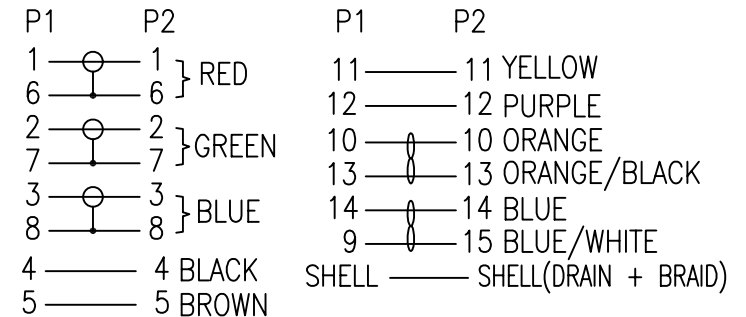
A	INITIAL RELEASE		11/24/08	
REV	DESCRIPTION OF CHANGE		DATE	
TOLERANCE INCHES M/M			Tri-Net Technology, Inc. http://www.trinetusa.com	
.X	.015	.30		
.XX	.010	.10		
.XXX	.005	.05		
DRAWN BY	Carl		SCALE	NONE
CHECK BY			UNIT	MM
APPD BY			SHEET	1/3
			DATE	11/24/08
			DWG NO.	
			TITLE	
			DIN 14/M TO HD15/F+FACE PLATE	
			PART NO.	
			EZ04-HD15-FP	



NOTE:

1. CABLE: [(30AWG X 3COAX, EACH COAX SPIRAL SHIELDED, 75Ω, UL1354) + (30AWG X 4C) + (30AWG X 2PAIRS)], AL-FOIL AND BRAID SHIELDED WITH DRAIN WIRE, UL2919, BLACK PVC JACKET, SLOT $\varnothing 8.5 \pm 0.15$ mm.
2. CONNECTOR:
 P1: DIN 14P MALE, NICKEL PLATED CONTACTS AND SHELL, LOCKER TYPE.
 P2: HIGH DENSITY D-SUB 15PIN FEMALE: SOLDER TYPE, GOLD FLASH CONTACTS, NICKEL PLATED SHELL.
3. METAL HEX NUT.
4. METAL FACE PLATE: 1 PORT, STAINLESS STEEL, WHITE PAINTED, WITH 2PCS METAL SCREWS.
5. SHIELDED: COPPER FOIL TAPE COVER PREMOLD AND 360° SOLDER TO CONNECTOR SHELL AND CABLE BRAID.
6. MOLDED BLACK PVC.
7. TESTING: 100% ELECTRICAL TEST.
8. MOLD NO.:D14M-N01, D14M-02.

PIN OUT



APPROVED BY
COMPANY: _____
PURCHASING/ENGINEER: _____
DATE: _____



	INITIAL RELEASE	11/24/08
REV	DESCRIPTION OF CHANGE	DATE
TOLERANCE INCHES M/M		Tri-Net Technology, Inc. http://www.trinetusa.com
.X	.015 .30	
.XX	.010 .10	
.XXX	.005 .05	
DRAWN BY	Carl	SCALE NONE UNIT MM REV A
CHECK BY		
APPD BY		SHEET 2/3 DATE 11/24/08 DWG NO.
		TITLE DIN 14/M TO HD15/F+FACE PLATE
		PART NO. EZ04-HD15-FP