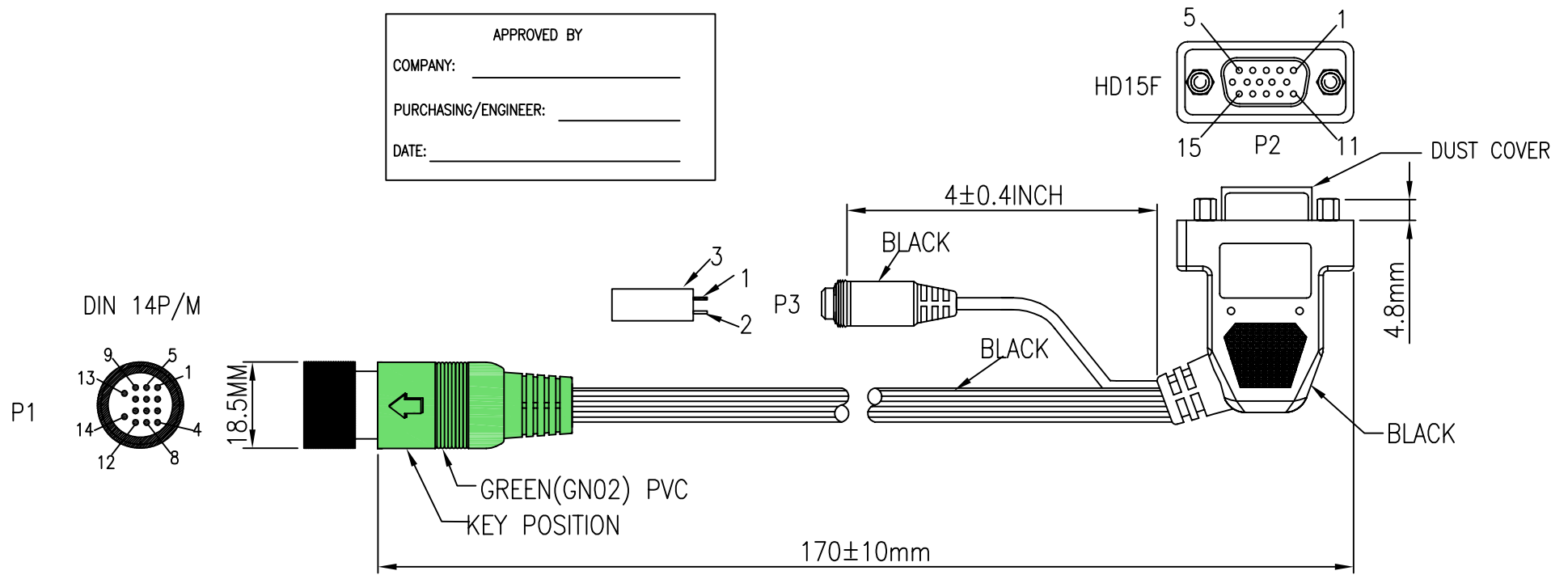
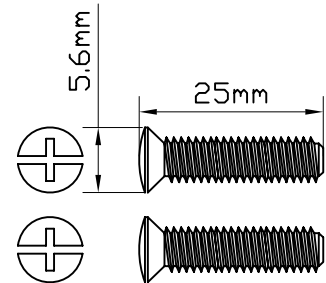
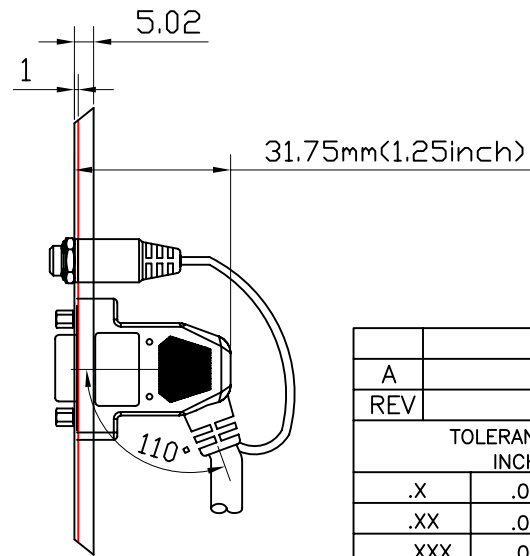
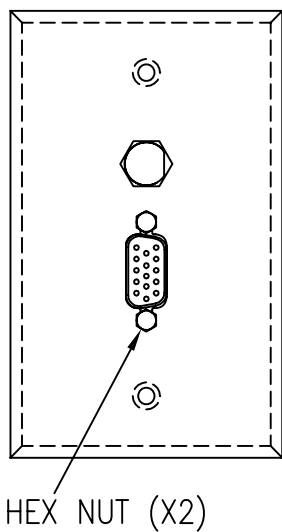
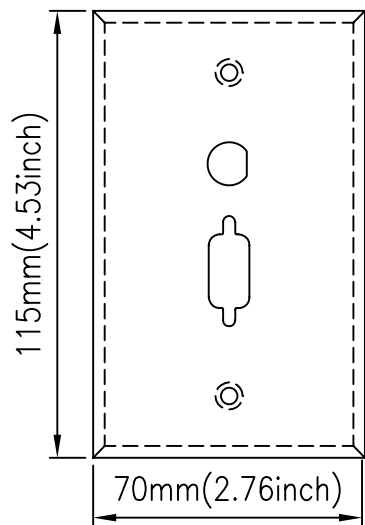


APPROVED BY _____
 COMPANY: _____
 PURCHASING/ENGINEER: _____
 DATE: _____



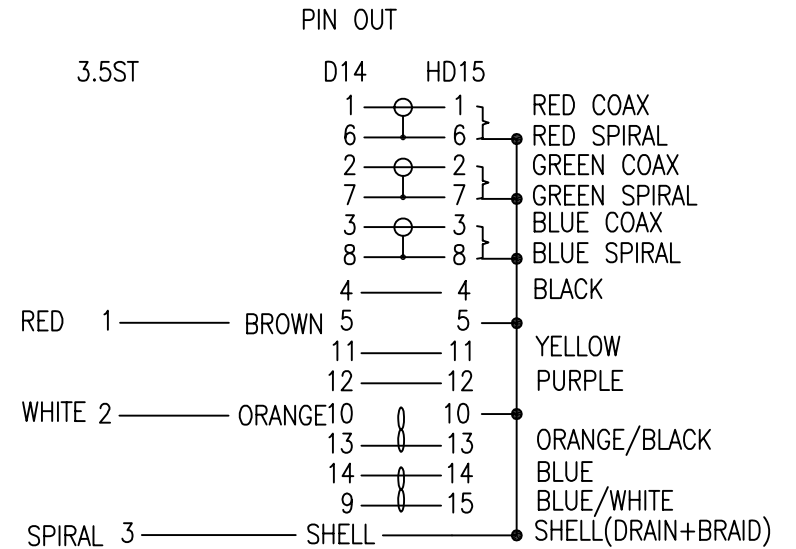
HDB15+3.5FT FACE PLATE



A	INITIAL RELEASE		05/03/08	
REV	DESCRIPTION OF CHANGE		DATE	
TOLERANCE			Tri-Net Technology, Inc. http://www.trinetusa.com	
	INCHES	M/M		
.X	.015	.30		
.XX	.010	.10		
.XXX	.005	.05	SCALE	NONE
DRAWN BY			UNIT	MM
Hero			SHEET	1/2
			DATE	05/03/08
CHECK BY			TITLE	DIN 14/M TO HD15/F+3.5ST/F
APPD BY			PART NO.	EZ04-HD15-35F-FP

NOTE:

1. CABLE1: [(30AWG X 3COAX, EACH COAX SPIRAL SHIELDED, 75Ω, UL1354) + (30AWG X 4C) + (30AWG X 2PAIRS)], AL-FOIL AND BRAID SHIELDED WITH DRAIN WIRE, UL2919, BLACK PVC JACKET, SLOT $\varnothing 8.5 \pm 0.15$ mm. CABLE2: NON UL, 26AWG*2C+SPIRAL SHIELD, BLACK PVC JACK, $OD 3.0 \pm 0.15$ mm.
2. CONN.:
 P1: DIN 14P MALE, NICKEL PLATED CONTACTS AND SHELL, LOCKER TYPE.
 P2: HIGH DENSITY D-SUB 15PIN FEMALE: SOLDER TYPE, GOLD FLASH CONTACTS, NICKEL PLATED SHELL.
 P3: DC3.5mm STEREO JACK, NICKEL PLATED SHELL, WITH NUT.
3. HEX NUT.
4. 1PCS METAL PANEL: 3.5ST JACK+HD15F, STAINLESS STEEL, WHITE PAINTED, 2PCS WHITE SCREW.
5. SHIELDED: COPPER FOIL TAPE COVER PREMOLD AND 100% CONTACT TO CONNECTOR SHELL.
 P1: COPPER FOIL TAPE 360° SOLDER; P2: COPPER FOIL TAPE SOLDER TO BRAID.
6. P1: MOLDING GREEN(GN02) 45P PVC; P2, P3: MOLDING BLACK 45 PVC.
7. TEST: 100% ELECTRICAL TEST.
8. MOLD NO.: D14M-N01, D14M-02, HD15F-110-01, HD15F-110-N01, DC35-01



APPROVED BY
COMPANY: _____
PURCHASING/ENGINEER: _____
DATE: _____



A	INITIAL RELEASE	05/03/08												
REV	DESCRIPTION OF CHANGE	DATE												
<table border="0" style="width: 100%;"> <tr> <td style="text-align: center;">TOLERANCE INCHES</td> <td style="text-align: center;">M/M</td> <td rowspan="4" style="text-align: center; vertical-align: middle;"> Tri-Net Technology, Inc. http://www.trinetusa.com </td> </tr> <tr> <td style="text-align: center;">.X</td> <td style="text-align: center;">.015</td> <td style="text-align: center;">.30</td> </tr> <tr> <td style="text-align: center;">.XX</td> <td style="text-align: center;">.010</td> <td style="text-align: center;">.10</td> </tr> <tr> <td style="text-align: center;">.XXX</td> <td style="text-align: center;">.005</td> <td style="text-align: center;">.05</td> </tr> </table>		TOLERANCE INCHES	M/M	Tri-Net Technology, Inc. http://www.trinetusa.com	.X	.015	.30	.XX	.010	.10	.XXX	.005	.05	
TOLERANCE INCHES	M/M	Tri-Net Technology, Inc. http://www.trinetusa.com												
.X	.015		.30											
.XX	.010		.10											
.XXX	.005		.05											
SCALE	NONE	REV A												
UNIT	MM													
DRAWN BY	<i>Hero</i>	<table border="0" style="width: 100%;"> <tr> <td style="text-align: center;">SHEET</td> <td style="text-align: center;">2/2</td> <td rowspan="2" style="text-align: center;">DWG NO.</td> </tr> <tr> <td style="text-align: center;">DATE</td> <td style="text-align: center;">05/03/08</td> </tr> </table>	SHEET	2/2	DWG NO.	DATE	05/03/08							
SHEET	2/2	DWG NO.												
DATE	05/03/08													
CHECK BY		TITLE DIN 14/M TO HD15/F+3.5ST/F												
APPD BY		PART NO. EZ04-HD15-35F-FP												