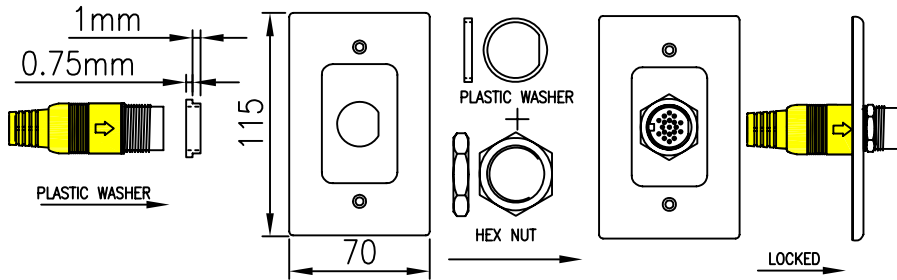


1PORT FACE PLATE



WIRE CONNECTION

P1	P2 COLOR	P1	P2 COLOR
1	WHITE	10	WHITE
3	BROWN	12	BLUE
2	DRAIN	11	DRAIN
4	WHITE	13	PURPLE
6	RED	14	RED
5	DRAIN	15	YELLOW
7	WHITE	16	ORANGE
9	GREEN	17	BLUE
8	DRAIN	18	GREEN
		19	WHITE
		SHELL	SHELL BRAID

NOTE:

- CABLE:UL20276 (28AWG*1P+D-Free-edge-AL)*4C+28AWG*1P+28AWG*5C+AB JACKET COLOR:BLACK OD:7.3±0.15mm.
- CONNECTOR:
P1: DIN 19P MALE, SOLDER TYPE, TINNED PLATED CONTACTS, INSULATION: BLACK, NICKEL PLATED SHELL.
P2: DIN19P FEMALE, NICKEL PLATED CONTACTS AND SHELL, LONG SCREW THREAD TYPE,WITH HEX NUT.
- MATEL FACE PLATE:1PORT,STAINLESS STEEL,WHITE PAINTED.
- ALL HOOD: MOLDED YELLOW(YL02) 45P PVC.
- SHIELDED: COPPER FOIL TAPE COVER PREMOLD AND 360° SOLDER TO CONNECTOR SHELL AND CABLE BRAID.
- 100% OPEN AND SHORT TESTING.
- MOLD NO: D14M-N01, D14M-02.D14F-N01, D14F-02.
- PACKING:EACH CABLE IN A BOX.



A	INITIAL RELEASE		11/23/07	
REV	DESCRIPTION OF CHANGE		DATE	
TOLERANCE INCHES		M/M	Tri-Net Technology, Inc. http://www.trinetusa.com	
.X	.015	.30		
.XX	.010	.10		
.XXX		.05	SCALE	NONE
DRAWN BY		LUCY	UNIT	MM
CHECK BY			SHEET	1/1
APPD BY		DATE	11/23/07	DWG NO.
TITLE			DIN19M TO DIN19F+FACE PLATE	
PART NO.			EZ04-D19-FP	