

PIN OUT

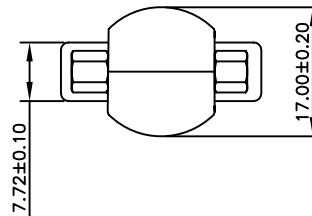
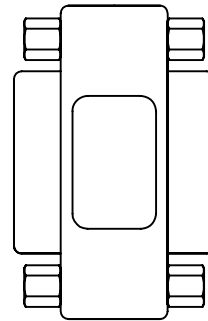
DVI29F	DVI29F	DVI29F	DVI29F
P1	P2	P1	P2
1	1	16	16
2	2	17	17
3	3	18	18
4	4	19	19
5	5	20	20
6	6	21	21
7	7	22	22
8	8	23	23
9	9	24	24
10	10	C1	C1
11	11	C2	C2
12	12	C3	C3
13	13	C4	C4
14	14	C5	C5
15	15	SHELL	SHELL

APPROVED BY \_\_\_\_\_

COMPANY: \_\_\_\_\_

PURCHASING/ENGINEER: \_\_\_\_\_

DATE: \_\_\_\_\_

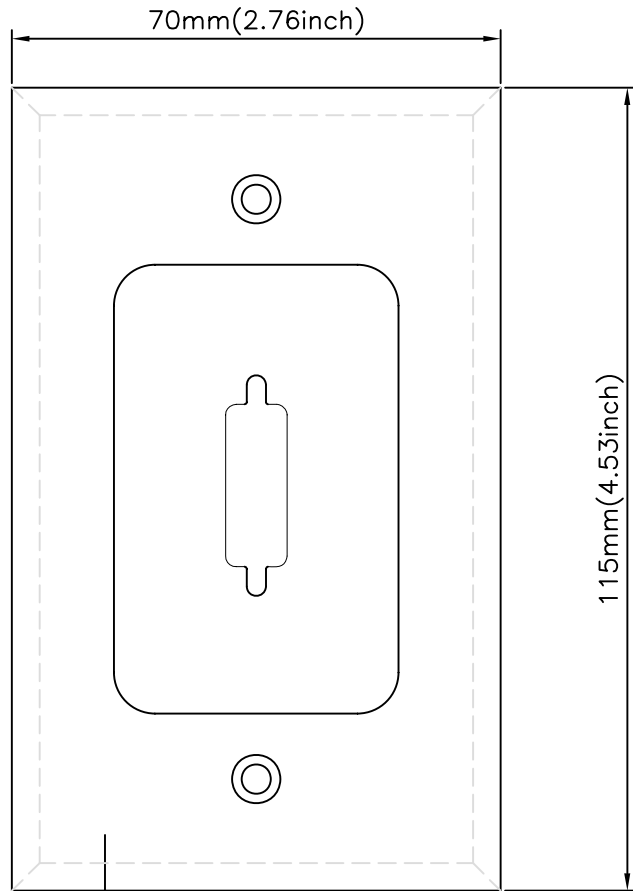


NOTE:

- CONN:P1,P2 DVI 24+5 FEMALE,PIN:G/F,INSULATION WHITE, ZINC ALLOY FOR SHELL.WITH 2PCS #4-40 NUT.
- PCB:PCB-E09-180D-A;PCB-E09-180D-B.
- P1&P2:HOOD MOLDED 25P PVC (WH-02).
- 100% ELECTRICAL TESTING:CONTACT RESISTANCE:1 OHM INSULATION RESISTANCE:20M OHM,VOLTAGE: DC 300V.
- MOLD NO:E09-01,E09-N01.

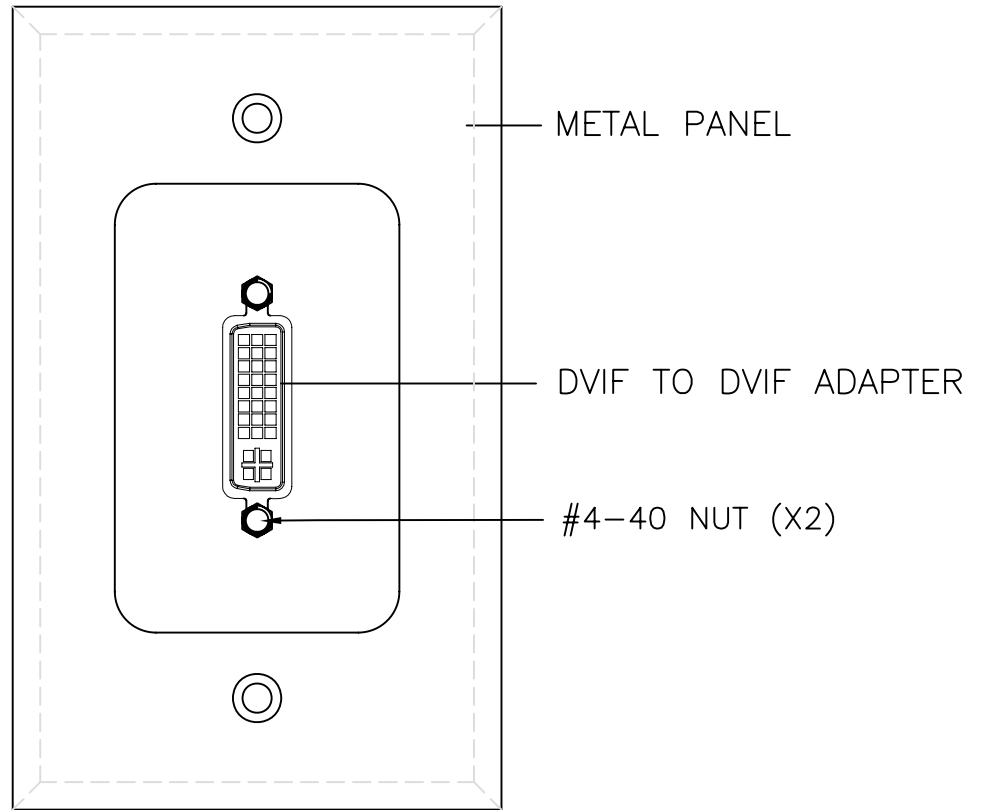


A	INITIAL RELEASE		11/21/08		
REV	DESCRIPTION OF CHANGE		DATE		
TOLERANCE INCHES		M/M	Tri-Net Technology, Inc. <a href="http://www.trinetusa.com">http://www.trinetusa.com</a>		
.X	.015	.30			
.XX	.010	.10			
.XXX	.005	.05	SCALE	NONE	REV A
DRAWN BY		Selina	UNIT	MM	
CHECK BY			SHEET	1/2	DWG NO.
APPD BY			DATE	11/21/08	
TITLE			DVI DF-DF-ADAPTER		
PART NO.			071-DVI-FP		



METAL PANEL: WHITE PLATED, STAINLESS STEEL.  
EZ04-DVID-FP

APPROVED BY	
COMPANY:	_____
PURCHASING/ENGINEER:	_____
DATE:	_____



ASSEMBLY DRAWING



A	INITIAL RELEASE		11/21/08		
REV	DESCRIPTION OF CHANGE		DATE		
TOLERANCE INCHES		M/M	Tri-Net Technology, Inc. <a href="http://www.trinetusa.com">http://www.trinetusa.com</a>		
.X	.015	.30			
.XX	.010	.10			
.XXX	.005	.05	SCALE	NONE	REV A
			UNIT	MM	
DRAWN BY	Selina		SHEET	2/2	DWG NO.
			DATE	11/21/08	
CHECK BY			TITLE DVI DF-DF-ADAPTER		
APPD BY			PART NO. 071-DVI-FP		