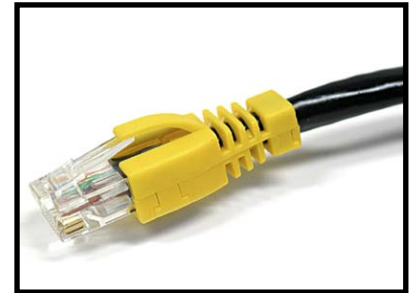


Cat6 Multi-Color UTP Patch Cables

Cable :

24 AWG, stranded (7 x 32) bare copper, four twisted pair with aluminum mylar foil shielded, drain wire, ETL/UL verified, meets Category 6 specifications, tested to 550 MHz.

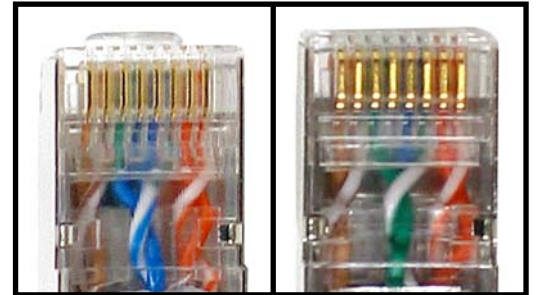


Jacket Colors :

Gray (GY), Blue (BL), Green (GN), Red (RD), Yellow (YL), Black (BK), Orange (OR), Purple (PP), White (WH).

Modular Plug :

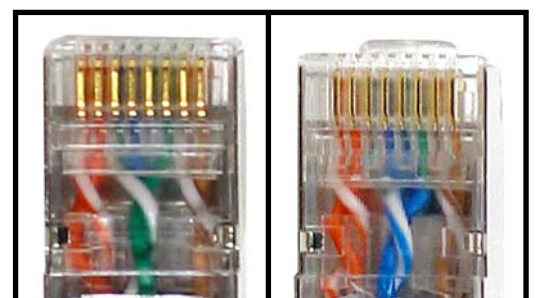
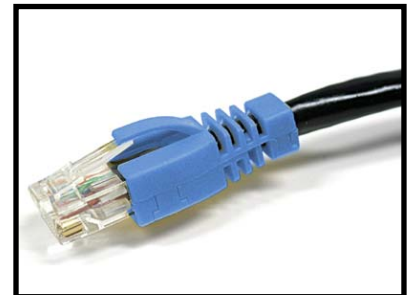
Category 6 long body 3 pieces stagger type RJ-45 plug with snag-free strain relief boot.



Twisted Pairs

Quality Testing :

- 100% continuity and ground testing with AQL 15% Attenuation, NEXT, Return Loss, Impedance testing.
- Snag-free strain relief boot provides the most secure and accurate connection.
- Multi-colored jackets enhance network cabling management solutions.
- New 3 pieces staggered type CAT6 RJ-45 plug improves NEXT performances.
- Meets and exceeds EIA/TIA 568A-4 Category 6 patch cable standards.



Twisted Pairs

Part Number :

Description

05GD-XX-A-COLOR (568B Wiring)	UTP CAT6 patch cords
05GD-XX-E-COLOR (568A Wiring)	UTP CAT6 patch cords

XX : Length of cable in feet.

