

VGA + RS232 UTP Extender 110 Type Faceplate Set

Included in the package:



Receiver



Transmitter



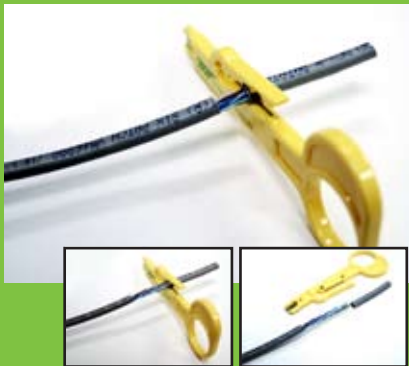
Screwdriver

Punchdown Tool



Set the punchdown tool to the 24AWG Solid Wire UTP Cable like this, rotate the tool for 2 or 3 times to cut the jacket.

1



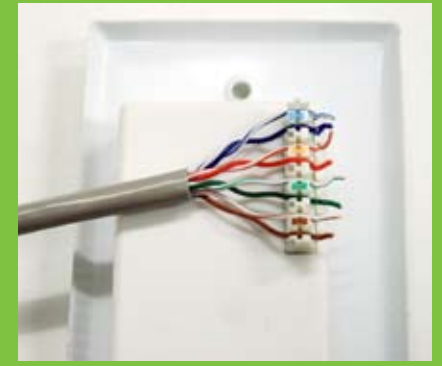
After jacket got cut, pull the jacket carefully.

2



Cut the unnecessary plastic.

3



Place the cable accordingly to the color code on the back of the wallplate.

4



Punchdown the cable to the designated slot using the tool so the cable will snug properly.

5

P/N: R02-EXT-RS-FP

Step-by-step instruction manual:

1. Set the punchdown tool to the 24AWG Solid Wire UTP Cable (not included) and rotate the tool to cut the jacket.
2. Pull the jacket carefully.
3. Cut the unnecessary plastic.
4. Place the cable accordingly to the color code on the back of the wallplate.
5. Punchdown the cable to the designated slot using the tool so the cable will snug properly.